

PG101-RF manual RF probe station

PG101-RF is a manual RF probe station developed by Pegasus, it's designed for lab research and analysis. The standard 150mm platform could be integrated diverse RF probe and tester for different applications and also support hot chuck to 200 °C with option. Multiple flexible accessories, let your measuring easy.

Features

- Standard platform is 150mm, different size customization
- Easy operation and rapid positioning
- Diverse RF probe and tester for different applications
- The measuring platform can be designed with multiple vacuum holes or concentric annular holes
- Independent high insulation frequency shielding design
- Current leakage <10fA
- Optional floor-standing shielding box
- Optional high frequency correction sheet

Technical specification

- 6" aluminum alloy nickel plated carrier plate
- 2" /4" /6" three vacuum holes can be switched (or full open)
- X-Y axis movement range: 6" X6" (10µm resolution)
- Z axis up and down adjustment distance: 10mm
- Adjustable Theta shaft (optional)
- Supports up to 4 magnetic probe holders
- Probe: according to different applications GGB, APT with any type (GSG, GS, SG)
- RF 40GHz~67GHz; 2 ports~4 ports
- Dimensions: 420mmWx420mmDx500mmH (including microscope)
- Weight: 30kg (including microscope)
- Microscope Specifications
 Eyepiece adjustable magnification: 20X
 Objective lens magnification: 0.67 ~ 4.5X
 Minimum visible area: 2.7mm diameter
 360 degree LED ring lamp
- Power supply: AC 100~240V (50/60Hz)
 Vacuum: -250mmHg, 7L/min



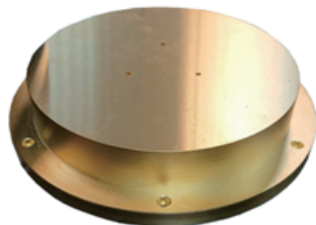
PG101-RF



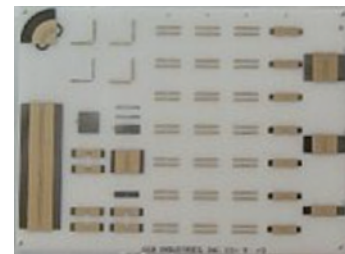
GGB RF probe (1)



GGB RF probe (2)



RF Wafer Chuck



RF correction sheet